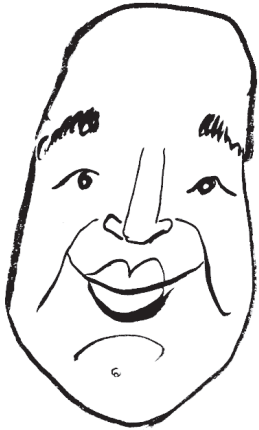


Shave and a Haircut

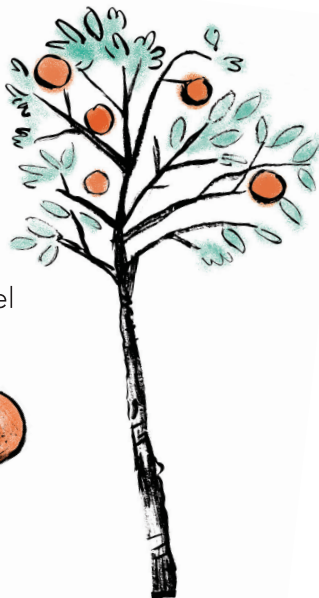
A jack of all trades, Figaro is also the best barber in Seville. Try your hand at hairstyling: Using the heads below, design your own hairdos for the opera's characters.



Hidden in Plain Sight

Can you find some of the musical instruments below in the word search? Look carefully, the words could be printed horizontally, vertically, diagonally, and even backward.

- | | |
|---------|--------------|
| Violin | Clarinet |
| Cello | Bassoon |
| Harp | Trumpet |
| Piccolo | Trombone |
| Flute | Timpani |
| Oboe | Glockenspiel |



F	D	B	P	I	A	N	O	G	M	B	L
C	L	A	R	I	N	E	T	C	O	R	E
G	J	U	T	R	T	I	M	P	A	N	I
A	H	K	T	E	C	I	A	L	T	O	P
A	R	O	Q	E	R	T	G	X	V	Y	S
N	Y	F	L	N	E	V	I	O	L	I	N
O	W	L	Y	O	H	R	C	D	E	T	E
O	O	P	N	B	A	S	S	K	L	A	K
S	B	E	T	M	R	S	S	A	B	O	C
S	O	R	B	O	P	I	C	C	O	L	O
A	E	O	E	R	A	O	Y	B	B	E	L
B	R	S	D	T	R	U	M	P	E	T	G

Operatic Mad-Lib

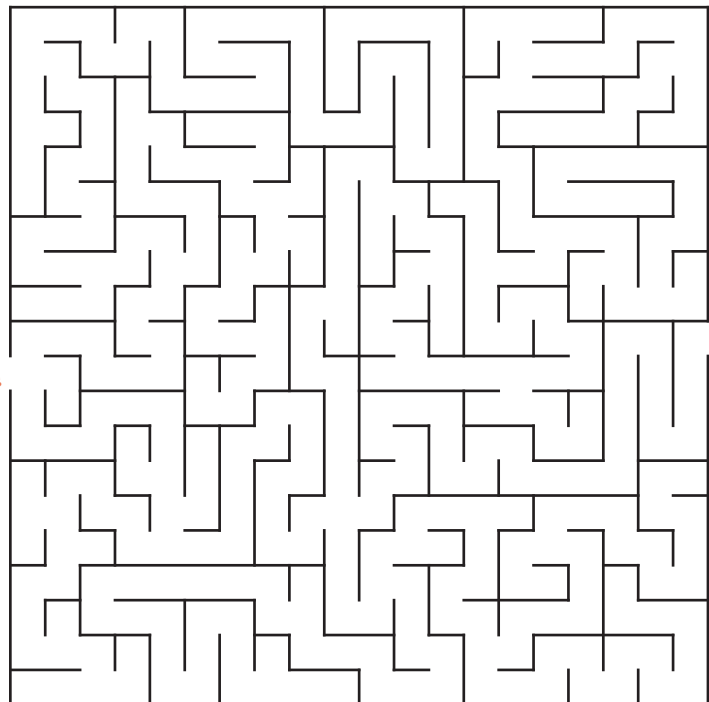
Fill in the blanks below to create your own version of the story of *Il Barbiere di Siviglia*. Remember, this opera is a comedy, so the crazier the answers the better!



Count Almaviva is in love with the young girl Rosina, but her _____ guardian, Dr. Bartolo,
ADJECTIVE DESCRIBING A PERSONALITY TRAIT
 wants to marry her instead. Count Almaviva disguises himself as a _____ named _____
PROFESSION YOUR NAME
 and sings _____ to Rosina under her window. She is so charmed by his voice, that she sends
YOUR FAVORITE SONG
 him a _____ returning her affections. Later that day, Almaviva appears at her home dressed
TYPE OF MESSAGE
 as a _____ and causes a commotion. The police arrive and are about to arrest
ADJECTIVE TYPE OF DISGUISE
 him, but when Almaviva shows them his _____, they realize who he really is and release him. That
NOUN
 night, a _____ storm passes by, and Figaro and the Count use a _____ they have
TYPE OF WEATHER NOUN
 stolen to unlock the balcony to Rosina's _____. Before they can all escape, Dr. Bartolo arrives,
ROOM IN HOUSE
 but when the Count reveals his true identity, Bartolo finally allows the two young people to marry. Everyone
 celebrates the upcoming wedding by sharing _____ together.
YOUR FAVORITE DESSERT

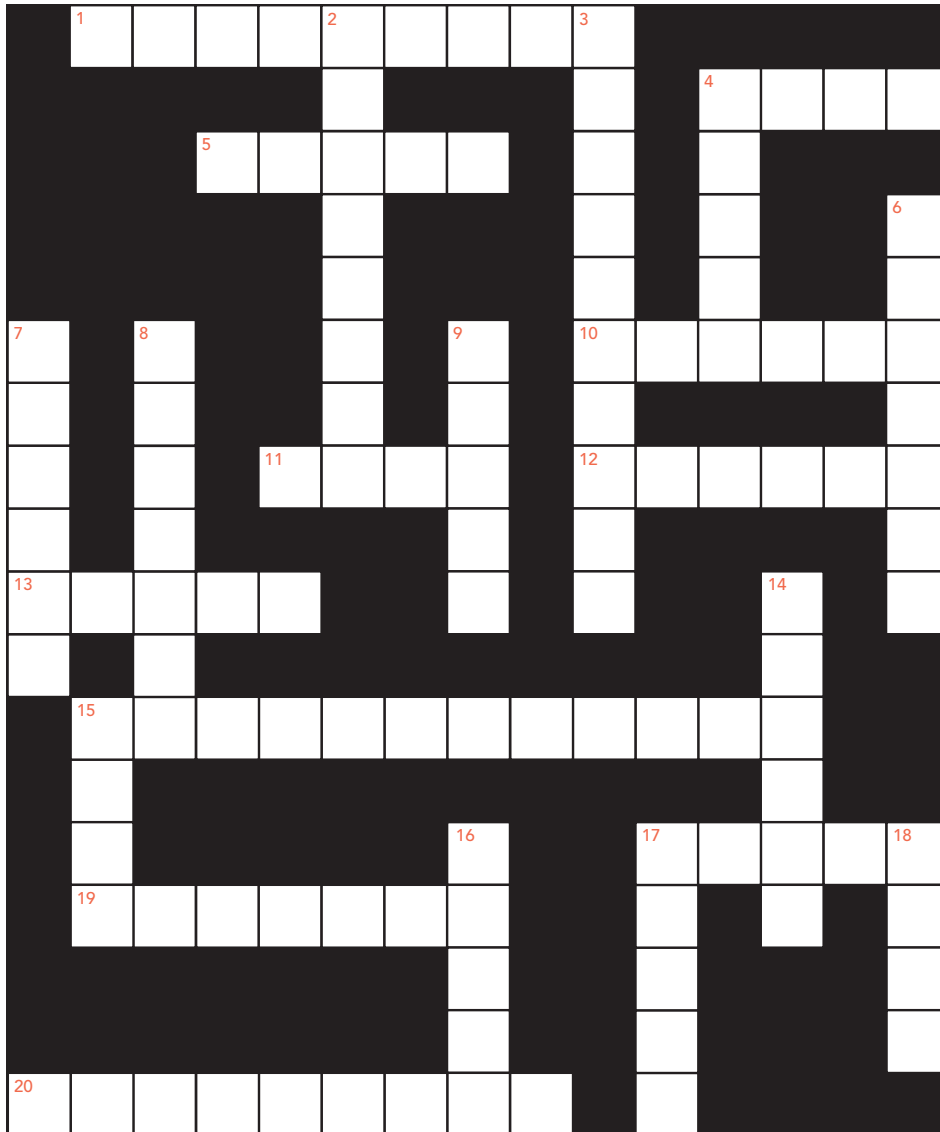
A-MAZE-ING ADVENTURE

Figaro needs to find the key to unlock Rosina's balcony. Help him locate it by showing him the way through the maze.



Cosmic Crossword

Complete the puzzle below by answering the clues about opera and *Il Barbiere di Siviglia*. If you need some help, many of the answers can be found in today's program.



ACROSS

- 1 _____ Rossini
- 4 The lowest-sounding brass instrument
- 5 The opposite of "tragic"
- 10 Figaro's main occupation
- 11 An operatic vocal solo
- 12 The barber of Seville
- 13 A member of the string family
- 15 *Il Barbiere di Siviglia* is based on a play by this author.
- 17 A musical mode that often sounds sad
- 19 Almaviva's disguise at the end of Act I
- 20 This composer wrote a version of *Il Barbiere di Siviglia* three decades before Rossini.

DOWN

- 2 The person who writes an opera's music
- 3 An Italian term meaning "comic opera" (two words)
- 4 Count Almaviva's voice type
- 6 Dr. _____, who wants to marry Rosina
- 7 A term indicating a lively tempo
- 8 The setting for *Il Barbiere di Siviglia*
- 9 A dynamic marking meaning "quiet," it's also a musical instrument.
- 14 The plucky heroine of *Il Barbiere di Siviglia*
- 15 Don Basilio's voice type
- 16 The rapid alternation of a note and the note above
- 17 Rossini composed many of his operas to star his wife, Isabella Colbran, a famous _____-soprano.
- 18 The city in which *Il Barbiere di Siviglia* premiered in 1816

