

Tenor Saxophone 2

RIGOLETTO

I. Preludio

Giuseppe Verdi
Arr. Dag Gabrielsen

Andante sostenuto ♩ = 66

6 8 12

17 20 13

33

p *ff*

II. "Questa o quella"

Allegretto ♩ = 96

36 41 4 41

46 51 59 8 7

66 67

72 75

78 2

mp *mf* *f*

84

rit.

4



III. "La donna è mobile"

88

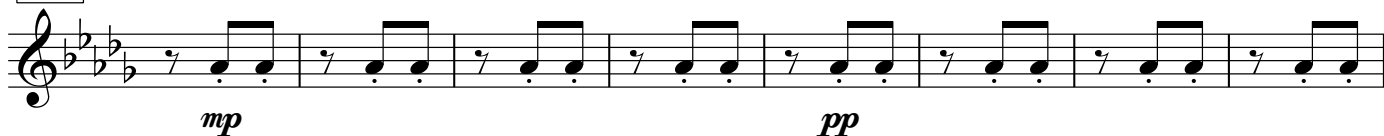
Allegretto ♩=138



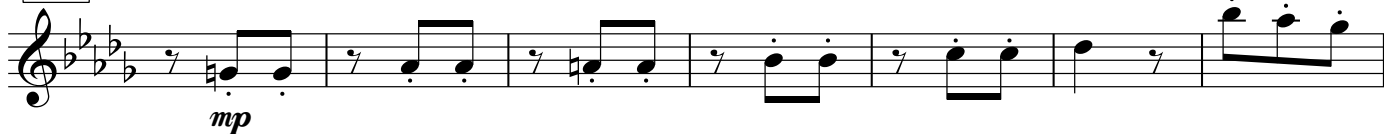
98



107



115



122



127

