

Tenor Saxophone 1

RIGOLETTO

I. Preludio

Giuseppe Verdi
Arr. Dag Gabrielsen

Andante sostenuto $\text{♩} = 66$ 8 12

6 4 12 *ppp*

16 *ff* 20 13

33 *ff*

II. "Questa o quella"

36 Allegretto $\text{♩} = 96$ 41

4 41 *mp*

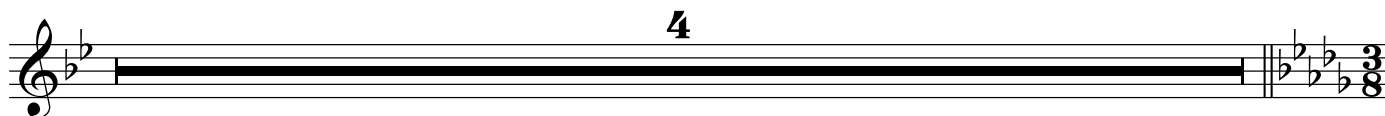
46 51 59 7

66 67 *mp*

72 75

78 2 *mf* *f*

84 rit.



III. "La donna è mobile"

88 Allegretto ♩=138



98



107



115

122



127

128



1.

2.

ff

ff