

Contrabass

RIGOLETTO

I. Preludio

Giuseppe Verdi
Arr. Dag Gabrielsen

Andante sostenuto $\text{♩} = 66$

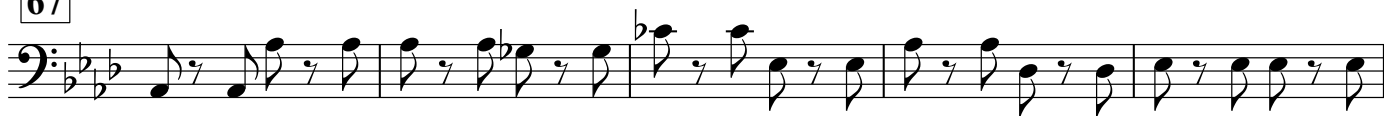
Musical score for Contrabass, I. Preludio, measures 1-30. The score is in bass clef, 4/4 time signature, and B-flat major. It begins with a 3-measure rest, followed by a half note G2. Dynamics include *mp*, *p*, *mp*, *ppp*, and *ff*. Measure numbers 8, 12, 17, 20, 25, and 30 are indicated. A 7-measure rest occurs at measure 25. The piece concludes with a double bar line and a 6/8 time signature change.

II. "Questa o quella"

36 Allegretto $\text{♩} = 96$

Musical score for Contrabass, II. "Questa o quella", measures 36-62. The score is in bass clef, 6/8 time signature, and B-flat major. It begins with a 2-measure rest, followed by a quarter note G2. Dynamics include *pp* and *p*. The instruction *pizz* (pizzicato) is present. Measure numbers 41, 46, 51, 57, and 62 are indicated.

67



72



75

78



80



84 rit.



III. "La donna è mobile"

88 Allegretto ♩=138

arco



98



107



115



122

127



128

