

GIUSEPPE VERDI

# RIGOLETTO

CONDUCTOR  
Daniele Callegari

PRODUCTION  
Bartlett Sher

SET DESIGNER  
Michael Yeargan

COSTUME DESIGNER  
Catherine Zuber

LIGHTING DESIGNER  
Donald Holder

REVIVAL STAGE DIRECTOR  
Sara Erde

C. GRAHAM BERWIND, III  
CHORUS DIRECTOR  
Tilman Michael

MARIA MANETTI SHREM  
GENERAL MANAGER  
Peter Gelb

JEANETTE LERMAN-NEUBAUER  
MUSIC DIRECTOR  
Yannick Nézet-Séguin

Opera in three acts

Libretto by Francesco Maria Piave,  
based on the play *Le Roi s'Amuse*  
by Victor Hugo

Monday, January 6, 2025  
7:00–9:50PM

The production of *Rigoletto* was  
made possible by a generous gift from  
**C. Graham Berwind, III – Director, Spring  
Point Partners, LLC; the Gramma Fisher  
Foundation, Marshalltown, Iowa; and  
Mr. and Mrs. Paul Montrone**

The revival of this production is made possible by a  
gift from C. Graham Berwind, III and Viking

In cooperation with Staatsoper Berlin

Throughout the 2024–25 season, the Met  
continues to honor Ukraine and its brave  
citizens as they fight to defend their country  
and its cultural heritage.

# The Metropolitan Opera

2024-25 SEASON

The 938th Metropolitan Opera performance of  
GIUSEPPE VERDI'S

## RIGOLETTO

CONDUCTOR  
Daniele Callegari

IN ORDER OF VOCAL APPEARANCE

DUKE OF MANTUA  
Pene Pati DEBUT

GIOVANNA  
Eve Gigliotti

BORSA  
Scott Scully

PAGE  
Mikki Sodergren

COUNTESS CEPRANO  
Tessa McQueen\*\* DEBUT

GUARD  
Yohan Yi

RIGOLETTO  
Luca Salsi

MADDALENA  
Rihab Chaieb\*

MARULLO  
Yeongtaek Yang\*\*  
DEBUT

COUNT CEPRANO  
Christopher Job

MONTERONE  
Blake Denson

SPARAFUCILE  
Soloman Howard

GILDA  
Erin Morley\*

Tonight's performances of the roles of Gilda and Rigoletto are underwritten by the Jan Shrem and Maria Manetti Shrem Great Singers Fund.

Monday, January 6, 2025, 7:00-9:50PM



KEN HOWARD / METROPERA

Luca Salsi in the title role of Verdi's *Rigoletto*

Musical Preparation **Derrick Inouye, Dan Saunders, Bradley Moore,\*** and **Joshua Greene**

Assistant Stage Director **Alison Pogorelc**

Assistant Costume Designer **Fabian Fidel Aguilar**

Stage Band Conductor **Joseph Lawson**

Fight Director **Lisa Kopitsky**

Italian Diction Coach **Nicolò Sbuelz**

Prompter **Joshua Greene**

Met Titles **Sonya Friedman**, revised for this production by **Michael Panayos** and **Paul Cremo**

Scenery, properties, and electrical props constructed and painted by **Bay Productions** and **Metropolitan Opera Shops**

Costumes constructed by **Metropolitan Opera Costume Department**; **Dawson Tailors Inc**, Baltimore; **John Cowles Studio**, East Hampton, Connecticut; **Arel Studio Theatrical Costumes**, New York; and **Fabio Toblini**, New York

Additional jewelry and tiaras by **Lawrence Vrba**, New York

Wigs and makeup constructed and executed by **Metropolitan Opera Wig and Makeup Department**

**This production uses lightning effects.**

This performance is made possible in part by public funds from the New York State Council on the Arts.

Before the performance begins, please switch off cell phones and other electronic devices.

\* Graduate of the Lindemann Young Artist Development Program

\*\* Member of the Lindemann Young Artist Development Program

#### **Met Titles**

To activate, press the red button to the right of the screen in front of your seat and follow the instructions provided. To turn off the display, press the red button once again. If you have questions please ask an usher at intermission.

Visit [metopera.org](http://metopera.org).

# Synopsis

## Act I

*Germany, during the era of the Weimar Republic.* At a party in his palace, the Duke of Mantua boasts of his way with women. He dances with the Countess Ceprano, and his hunchbacked jester, Rigoletto, mocks the Countess's enraged but helpless husband. The courtier Marullo bursts in with the latest gossip: Rigoletto is suspected of keeping a young mistress in his home. The jester, unaware of the courtiers' talk, continues to taunt Ceprano, who plots with the others to punish the Duke. Monterone, an elderly nobleman, forces his way into the crowd to denounce the Duke for seducing his daughter, and Rigoletto viciously ridicules him. Monterone is arrested and curses Rigoletto.

Rigoletto hurries home, disturbed by Monterone's curse. He encounters Sparafucile, a professional assassin, who offers his services. The jester reflects that his own tongue is as sharp as the murderer's dagger. Rigoletto enters his house and warmly greets his daughter, Gilda. Afraid for the girl's safety, he warns her nurse, Giovanna, not to let anyone into the house. When the jester leaves, the Duke appears and bribes Giovanna, who lets him into the courtyard. He declares his love for Gilda, who has secretly admired him at church, and tells her that he is a poor student named Gualtier Maldè. After he leaves, she tenderly thinks of her newfound love before going to bed. The courtiers gather outside intending to abduct Rigoletto's "mistress." Meeting the jester, they quickly change their story and fool him into wearing a blindfold and holding a ladder. Then, they carry off Gilda. Rigoletto, rushing into the house, realizes that his daughter is gone and collapses as he remembers Monterone's curse.

## *Intermission* (AT APPROXIMATELY 8:05PM)

## Act II

In his palace, the Duke is distraught about the abduction of Gilda. When the courtiers return and tell him how they took the girl from Rigoletto's house and left her in the Duke's chamber, the Duke hurries off to the conquest. Rigoletto enters, looking for Gilda. The courtiers are astonished to discover that she is his daughter rather than his mistress but prevent him from storming into the Duke's chamber. The jester violently accuses them of cruelty, then asks for compassion. Gilda appears and runs in shame to her father, who orders the others to leave. Alone with Rigoletto, Gilda tells him of the Duke's courtship, then of her abduction. When Monterone passes by on his way to execution, the jester swears that both he and the old man will be avenged. Gilda begs her father to forgive the Duke.

## Act III

Rigoletto and Gilda arrive at an inn where Sparafucile and his sister, Maddalena, live. Inside, the Duke laughs at the fickleness of women. Gilda and Rigoletto watch through the window as the Duke amuses himself with Maddalena. The jester sends Gilda off disguised as a boy and pays Sparafucile to murder the Duke. Gilda returns to overhear Maddalena urge her brother to spare the handsome stranger and kill the hunchback instead. Sparafucile refuses to murder Rigoletto but agrees to kill the next stranger who comes to the inn so that he will be able to produce a dead body. Gilda decides to sacrifice herself for the Duke. She knocks at the door, and the pair stab her. Rigoletto returns to claim the body, which he assumes is the Duke's. As he gloats over the sack that Sparafucile has given him, he hears his supposed victim singing in the distance. Frantically tearing open the sack, he finds his daughter, who dies asking his forgiveness. Horrified, Rigoletto remembers Monterone's curse.



### *Rigoletto* on Demand

Looking for more *Rigoletto*? Check out **Met Opera on Demand**, our online streaming service, to enjoy outstanding performances from past Met seasons, including two electrifying *Live in HD* transmissions, a classic 1981 telecast starring Luciano Pavarotti, and a dozen historic radio broadcasts featuring generations of beloved Met artists. Start your seven-day free trial and explore the full catalog of more than 850 complete performances at [metoperaondemand.org](http://metoperaondemand.org).

Support for Met Opera on Demand is provided by the Ting Tsung and Wei Fong Chao Foundation and Dorothy and Charles H. Jenkins, Jr.

*Giuseppe Verdi*

# Rigoletto

---

*Premiere: Teatro La Fenice, Venice, 1851*

A dramatic journey of undeniable force, *Rigoletto* commands the respect of critics, performers, and audiences alike. It is the tale of an outsider—a hunchbacked jester—who struggles to balance the dueling elements of beauty and evil that exist in his life. The opera was immensely popular from its premiere—from even before its premiere, according to accounts of the buzz that surrounded the initial rehearsals—and remains fresh and powerful to this day. The story is one of the most accessible in opera, based on a controversial Victor Hugo play whose full dramatic implications only became apparent when transformed by Verdi's musical genius. Written during the most fertile period of Verdi's artistic life, the opera resonates with a Shakespearean universality.

### *The Creators*

In a remarkable career spanning six decades in the theater, Giuseppe Verdi (1813–1901) composed 26 operas, at least half of which are at the core of today's repertoire. His role in Italy's cultural and political development has made him an icon in his native country. Francesco Maria Piave (1810–76), Verdi's librettist for *Rigoletto*, collaborated with him on ten works, including *Ernani*, *La Traviata*, *La Forza del Destino*, and the original versions of *Macbeth* and *Simon Boccanegra*.

### *The Setting*

Victor Hugo's 1832 play *Le Roi s'Amuse* (*The King Amuses Himself*), set at the court of King François I of France (circa 1520), is a blatant depiction of depraved authority. In adapting it, Verdi and Piave fought incessantly with the Italian censors in a well-documented battle. Though Verdi had no love of royalty and favored a republic, he was not a proletarian ideologue like Hugo, and he tended to view people more as individuals than as representatives of classes. He was content, with Piave's deft juggling, to set the opera at the non-royal Renaissance court of Mantua and to change all the names, but held firm on other issues in the story, such as the curse that is the catalyst of the drama. Although the Duke remains unnamed, he was modeled on history's Vincenzo Gonzaga (1562–1612). The Gonzaga family motto—"Forse che sì, forse che no" ("Maybe yes, maybe no")—provides an interesting insight into some of the Duke's cavalier pronouncements. The Met's current production moves the action to Weimar-era Germany, a time and place with surprising parallels to the decadent world of Verdi's original setting.

## *The Music*

*Rigoletto* contains a wealth of melody, including one that is among the world's most famous: the tenor's jaunty "La donna è mobile." The opera's other familiar arias—"Questa o quella" and "Caro nome," for example—are also rich with character insight and dramatic development. The heart of the score, though, lies in its fast-moving subtleties and apt dramatic touches. The baritone's solos, "Pari siamo" (Act I) and "Cortigiani, vil razza dannata" (Act II), are epic scenes telescoped to less than ten minutes each. The celebrated father-daughter duets also reflect Verdi's overall design. Rigoletto sings of his protective love for Gilda in Act I in a spun-out phrase of simple, honest melody, while her music decorates his. In their subsequent scene in Act II, Gilda's music (and, by implication, her life) is similarly intertwined with that of Rigoletto, until finally her melody breaks away as she strives to declare her adolescent independence. The famous Act III quartet, "Bella figlia dell'amore," is an ingenious musical analysis of the diverging reactions of four characters in the same moment: The Duke's music rises with urgency and impatience, Gilda's droops with disappointment, Rigoletto's remains measured and paternal, while the promiscuous Maddalena is all over the place. In the context of the opera, the merely lovely music becomes inspired drama.

## *Met History*

Met audiences first heard *Rigoletto* within a month of the company's inaugural performance, on November 16, 1883. The 1903–04 season opened with the company debut of Enrico Caruso as the Duke—a role that he went on to sing to sing 38 times before his premature death in 1921. The opera's title role was identified for many years with Italian baritone Giuseppe De Luca, who gave 96 performances between 1916 and 1940. Other notable Met *Rigolettos* have included Leonard Warren, Robert Merrill, and Cornell MacNeil (who surpassed De Luca with a record 102 appearances between 1959 and 1980). A new production in 1951, with Warren in the title role and Hilde Güden as Gilda, in her first Met appearance, also featured the company debut of designer Eugene Berman. Audience favorite Roberta Peters sang Gilda 88 times between 1951 and 1985—more than any soprano in Met history. In 1977, John Dexter directed a new production, which starred Sherrill Milnes, Ileana Cotrubaş, Plácido Domingo, Isola Jones, and Justino Díaz. A new staging by Otto Schenk premiered in 1989 with June Anderson in her Met debut as Gilda, Luciano Pavarotti as the Duke, and Leo Nucci as Rigoletto. Michael Mayer made his debut with the company directing a new staging in January 2013, featuring Željko Lučić, Diana Damrau, and Piotr Beczała. On New Year's Eve 2021, Bartlett Sher unveiled the company's current staging, starring Quinn Kelsey in the title role, Rosa Feola as Gilda, and Beczała as the Duke.

## Program Note

As with Beethoven, Verdi's body of work is often divided by contemporary commentators into three artistic periods. In the first, stretching from 1839 to 1850, Verdi was at his most prolific, quickly completing 15 operas that established him as one of the world's leading opera composers and the successor to Bellini, Donizetti, and Rossini, all of whom had recently died or retired. The towering masterpieces that guaranteed Verdi's position alongside opera's few all-time great composers, however, did not appear until the second and third periods of his career, marked by a significant break away from, or at least a highly innovative re-interpretation of, the traditional forms and expectations of Italian opera. Keeping with the Beethoven analogy, *Rigoletto* was Verdi's "Eroica," marking the beginning of the composer's middle period and clearly surpassing in originality and achievement all of his previous work. At its 1851 premiere and throughout the ensuing 13-performance run at Venice's Teatro La Fenice, *Rigoletto* was an enormous success, and it traveled quickly from there. By 1855, the opera had been produced throughout Italy, across Europe, and as far afield as New York, Havana, and Montevideo, Uruguay. This international success, combined with the premieres of *Il Trovatore* and *La Traviata*—which followed close on *Rigoletto's* heels in 1853—put to rest any remaining doubt regarding Verdi's operatic primacy.

Despite *Rigoletto's* eventual success, it was very nearly killed before its birth, needing something of a political miracle just to see the light of day. After receiving the commission from La Fenice, Verdi—an ardent humanist, democrat, and patriot who longed for Italy to be free from the autocratic rule of France and Austria—turned to an uncomfortable source of inspiration: a play by Victor Hugo called *Le Roi s'Amuse* (*The King Amuses Himself*). Scathing and bleak, it centers on the amorous exploits of the historical French king François I and the downfall of his physically deformed and morally corrupt jester, Triboulet, who encourages and makes light of the king's lechery. The hunchbacked antihero ultimately reaps the poisonous crop he has sown when François discovers and rapes his sheltered daughter, whom he has hidden away from the corruption of the court. Worse yet, in a botched attempt to arrange the king's murder in revenge, Triboulet inadvertently causes his daughter's death instead.

Naturally, Austrian censors (who had jurisdiction over northern Italy, most of which was a province of the Habsburg Empire at the time) were not impressed with Verdi and librettist Francesco Maria Piave's work. Three months before the scheduled premiere, the administration of La Fenice received a letter from the authorities expressing the regional governor's disappointment that Verdi and Piave "should not have chosen a more worthy vehicle to display their talents than the revolting immorality and obscene triviality of *La Maledizione* [*The Curse*, as *Rigoletto* was originally titled]." The letter communicated that any performance of the opera was absolutely forbidden and instructed that no one's time be



wasted with protestations or appeals. Luckily, this last directive was ignored, and after extensive revisions to the work's setting and its characters' identities—the scene moved from the French court to Mantua, King François became the local Duke, Triboulet became Rigoletto, and so on—the newly titled *Rigoletto* won its approval for performance from a censor who, by a crucial twist of fate, was an opera lover and an admirer of Verdi's work.

Though the play's political bent surely played its part in attracting Verdi's attention, it was the emotional, psychological, and narrative power of *Le Roi s'Amuse*, and the depth and inherent contradiction of Triboulet's character, that most appealed to Verdi, an intensely intellectual and extremely well-read man for whom literature, poetry, and drama held as much significance as music. (The collection of authors on whose work he based his operas reads like a cross-section of history's great writers: Hugo, Byron, Schiller, Voltaire, and most of all, Shakespeare, a formative influence and continual source of inspiration for Verdi, who read and re-read the playwright's works from childhood to old age.) It is therefore hard to overestimate the composer's level of admiration for Hugo's play, which he described in a letter to Piave as "one of the greatest creations of modern theater. The story is great, immense, and includes a character who is one of the greatest creations that the theaters of all nations and all times will boast. ... Triboulet is a creation worthy of Shakespeare."

The genius of Verdi's transformation of Hugo's spoken drama into *Rigoletto*—and indeed of the stylistic step forward represented by this first work of Verdi's second creative period—is the closeness of music, text, and action. Form and content are streamlined and treated fluidly so that neither the drama nor the music is distorted to fit the other, but rather the two are woven into a single organic whole. In the case of *Rigoletto*, this makes for a grim, vicious, and powerfully effective work, an opera noir in which the tension never flags and no respite is provided from the disturbing arc of the plot. Verdi and Piave have stripped Hugo's story and characters down to their bare essentials. From the opening scene—in which Monterone spits out his curse at a man so depraved that he would taunt an anguished father unable to protect his daughter—to the final scenes—in which Rigoletto himself tastes the impotence and torment of that very same situation and worse—not a single word of text or note of music is wasted. This is not a cathartic tragedy or a tale of noble sacrifice. There are no admirable characters here, no moral lesson, no redemption, and no silver lining. There is only a merciless depiction of society's dark side.

With his music, Verdi takes all of this and makes it human, creating the psychological and emotional dimension that is mostly absent from the minimalist, clear-eyed text. Largely abandoning the predictable alternating structure of recitative, aria, and ensemble numbers, Verdi instead drives constantly forward in an arioso-like mixture of the three, relying mostly on passages for two or more

ALSO ON STAGE



PAOLA KUDACKI/MET OPERA

GIUSEPPE VERDI

# AIDA

NEW PRODUCTION

Director Michael Mayer brings ancient Egypt to life with towering scenery and dynamic animated projections in a spectacular new production conducted by Music Director Yannick Nézet-Séguin. Soprano Angel Blue stars in the soaring title role, opposite tenor Piotr Beczala as the hero Radamès. Mezzo-soprano Judit Kutasi completes the principal love triangle as Aida's rival, Amneris, and baritone Quinn Kelsey sings Aida's father, Amonasro.

**DEC 31 JAN 4, 7, 10, 14, 18**mat, 21, 25mat

Tickets start at \$25 [metopera.org](https://www.metopera.org)

characters that flow seamlessly together. Trimming the fat of virtuoso vocal display, he strives for naturalness of expression. Consequently, what solo numbers there are must be handled by the performers with tasteful understatement to avoid seeming out of place and stalling the crucial momentum. As Verdi himself explained in response to a request for an additional showpiece aria for the soprano who first sang Gilda, “any new number would be superfluous ... [and] would make no effect without the right time and place. ... My intention was that *Rigoletto* should be one long series of duets, without arias and finales, because that is how I felt it. If anyone replies, ‘But you could have done this or that or the other,’ I can only say, ‘That may be, but I did not know how to do any better.’” It comes as no surprise, therefore, that *Rigoletto*’s finest moment is the ingenious Act III quartet, combining the work’s emotional high point with its musical one and achieving a level of perfection matched by few other passages in all of opera.

One is also constantly amazed by Verdi’s inventiveness and ability to unmistakably conjure his desired emotions and impressions while leaving them unspoken. Through evocative scoring (the chorus’s imitation of wind during the storm in Act III), thematic manipulation (the curse leitmotif that is established in the opera’s very first measures and lurks beneath each of its character’s realizations of their fate), and pitch-perfect character painting (the very nature of each personality revealed by the style and color of their music), Verdi’s score communicates subliminally with the listener. In Act II, for example, “while [Rigoletto] sings and moves us to pity,” musicologist Vincent Godefroy observes, “the orchestra is commenting on his daughter’s experience behind the locked door. ... Concentrate on the orchestra and you will hear the rape of Gilda.” Of similar genius is the treatment of “La donna è mobile”—by far the most frequently excerpted bit of *Rigoletto*. So carefree and charmingly tongue-in-cheek on its own, Verdi’s jaunty little tune is positively slimy in context, and when its distant strains return in the final scene to transform Rigoletto’s bloodthirsty gloating to horrible dread, the effect is viscerally sickening. These musical masterstrokes, resonating with the listener on a subconscious and primal level, ensure that *Rigoletto* will never lose its power to send audiences home awestruck, profoundly moved, mentally unsettled, and most likely a bit queasy.

—Jay Goodwin

*Jay Goodwin is the Met’s Editorial Director.*

ALSO ON STAGE



KEN HOWARD / MET OPERA

GIACOMO PUCCINI

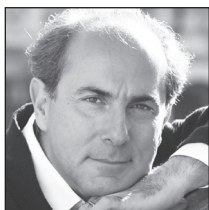
# TOSCA

Following celebrated performances in 2021—hailed by *The New York Times* for their “crackling energy, sure-paced suspense, romantic reverie, and thrilling singing”—soprano Sondra Radvanovsky and tenor Brian Jagde reunite in Puccini’s passionate melodrama. Bass-baritone Bryn Terfel makes a long-awaited return as Scarpia, with Maestro Xian Zhang on the podium.

**JAN 9**, 12mat, 17, 23

Tickets start at \$25 [metopera.org](https://www.metopera.org)

## The Cast



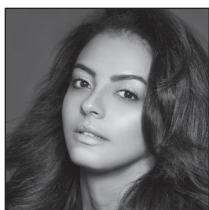
### Daniele Callegari

CONDUCTOR (MILAN, ITALY)

**THIS SEASON** *Rigoletto* and *Il Trovatore* at the Met, *Tosca* at the Royal Swedish Opera, *La Traviata* at the Norwegian National Opera, *Rigoletto* in Venice, and concerts with the Orchestra Sinfonica Siciliana.

**MET APPEARANCES** *Nabucco*, *La Traviata*, *Il Trovatore*, and *La Gioconda* (debut, 2008).

**CAREER HIGHLIGHTS** He served as chief conductor of the Royal Flanders Philharmonic Orchestra between 2002 and 2008 and principal conductor of Wexford Festival Opera from 1998 to 2001. He has conducted productions at Torre del Lago's Festival Puccini, the Israeli Opera, the Bavarian State Opera, the Deutsche Oper Berlin, Staatsoper Berlin, La Scala, Dutch National Opera, the Paris Opera, the Théâtre des Champs-Élysées, the Vienna State Opera, and in Naples, Hamburg, Nice, Antibes, Oviedo, Toulouse, Brussels, Dresden, Barcelona, Florence, Palermo, Bologna, Rome, Turin, Monte Carlo, and Tokyo, among others. He has also led concerts with the Orchestra dell'Accademia Nazionale di Santa Cecilia, Rotterdam Philharmonic Orchestra, Orchestre National de France, Frankfurt Radio Symphony, Ireland's RTÉ National Symphony Orchestra, Tokyo Philharmonic Orchestra, Prague Philharmonia, Orchestra Sinfonica di Milano Giuseppe Verdi, and Gürzenich Orchestra Cologne, among many others.



### Rihab Chaieb

MEZZO-SOPRANO (MONTREAL, CANADA)

**THIS SEASON** Maddalena in *Rigoletto* at the Met, Fenena in *Nabucco* at the Canadian Opera Company, Mozart's Requiem with the Orchestre Symphonique de Québec and Orchestre Philharmonique et Chœur des Mélomanes, Dorabella in *Così fan tutte* at LA Opera, Beethoven's *Missa Solemnis* with the National Symphony Orchestra, Beethoven's Symphony No. 9 with the Philadelphia Orchestra and Vancouver Symphony Orchestra, Lola in *Cavalleria Rusticana* at the Bavarian State Opera, the title role of *Carmen* at Opera Australia, and concerts with the Los Angeles Philharmonic, Kalamazoo Symphony Orchestra, and Vienna Symphony.

**MET APPEARANCES** Nefertiti in Philip Glass's *Akhnaten*, Zerlina in *Don Giovanni*, Laura in *Luisa Miller*, Lola, the Sandman in *Hansel and Gretel*, a Woman of Crete in *Idomeneo*, and Zulma in *L'Italiana in Algeri* (debut, 2016).

**CAREER HIGHLIGHTS** Recent performances include *Carmen* at the Quincena Musical de San Sebastián and Glyndebourne Festival, Fenena at the Deutsche Oper Berlin and Bavarian State Opera, Dorabella at the Seiji Ozawa Music Academy, Charlotte in *Werther* in Zurich, and Claire in the world premiere of Mikael Karlsson's *Melancholia* at the Royal Swedish Opera. She is a graduate of the Met's Lindemann Young Artist Development Program.

ALSO ON STAGE



EVAN ZIMMERMAN/MET OPERA

GIACOMO PUCCINI

# LA BOHÈME

The world's most popular opera takes the stage in Franco Zeffirelli's beloved production. Soprano Eleonora Buratto and tenor Matthew Polenzani are the lovestruck bohemians Mimi and Rodolfo, alongside soprano Adela Zaharia and baritone David Bizic as Musetta and Marcello. Kensho Watanabe and Met Music Director Yannick Nézet-Séguin trade off on the podium.

**JAN** 11, 15, 18, 22, 25

Tickets start at \$25 [metopera.org](http://metopera.org)



## Soloman Howard

BASS (WASHINGTON, D.C.)

**THIS SEASON** Sparafucile in *Rigoletto* and Sarastro in *The Magic Flute* at the Met, Sparafucile at Lyric Opera of Chicago, Banquo in *Macbeth* at Washington National Opera, Mozart's Requiem in Barcelona, Hunding in *Die Walküre* at Covent Garden, and Colline in *La Bohème* and Hunding at the Santa Fe Opera.

**MET APPEARANCES** Timur in *Turandot*, the Marquis of Calatrava / Padre Guardiano in *La Forza del Destino*, Sarastro in *The Magic Flute*, and the King in *Aida* (debut, 2014).

**CAREER HIGHLIGHTS** Recent performances include the Commendatore in *Don Giovanni* at the Santa Fe Opera, Hunding in concert with the Rotterdam Philharmonic Orchestra, the Lion in Jeanine Tesori's *The Lion, the Unicorn, and Me* at Washington National Opera, Sparafucile in Hamburg, Fafner in *Das Rheingold* at Covent Garden and the Dallas Opera, and Muhammad Ali in D. J. Sparr's *Approaching Ali* at Opera Las Vegas. He has also sung Ramfis in *Aida* at Covent Garden; the Grand Inquisitor in *Don Carlos* and Wurm in *Luisa Miller* at Lyric Opera of Chicago; the Commendatore, Don Fernando in *Fidelio*, and Angelotti in *Tosca* at San Francisco Opera; Sarastro in *Die Zauberflöte* at the Glyndebourne Festival; and Wurm at English National Opera.



## Erin Morley

SOPRANO (SALT LAKE CITY, UTAH)

**THIS SEASON** Gilda in *Rigoletto* and Olympia in *Les Contes d'Hoffmann* at the Met, Mozart's Requiem with the Boston Symphony Orchestra, Cunegonde in *Candide* in Dresden, and recitals and concerts at the Yale School of Music, Brigham Young University, Wigmore Hall, Amsterdam's Royal Concertgebouw, and with Friends of Chamber Music, Boston Baroque, and the Staatskapelle Berlin.

**MET APPEARANCES** Since her 2008 debut as the First Madrigal Singer in *Manon Lescaut*, she has sung more than 100 performances of 15 roles, including Pamina in *Die Zauberflöte* and *The Magic Flute*, Sophie in *Der Rosenkavalier*, Gilda, the title role of Matthew Aucoin's *Eurydice*, Sister Constance in *Dialogues des Carmélites*, and Olympia.

**CAREER HIGHLIGHTS** Recent performances include Morgana in *Alcina* in concert with Les Musiciens du Louvre, Gilda at Covent Garden and the Vienna State Opera, Norina in *Don Pasquale* at the Glyndebourne Festival, the title role of *Lakmé* with Washington Concert Opera, and Zerbinetta in *Ariadne auf Naxos* at La Scala. She is a graduate of the Met's Lindemann Young Artist Development Program and was a 2021 recipient of the Met's Beverly Sills Award, established by Agnes Varis and Karl Leichtman.



## Pene Pati

TENOR (APIA, SAMOA)

**THIS SEASON** The Duke of Mantua in *Rigoletto* for his debut at the Met; the title role of *Faust* at the Paris Opera; Rodolfo in *La Bohème* at Covent Garden, the Bavarian State Opera, Lyric Opera of Chicago, and San Francisco Opera; the title role of *Werther* in concert with the Geneva Chamber Orchestra; Mendelssohn's *Elijah* at the Salzburg Easter Festival; Nadir in *Les Pêcheurs de Perles* at the Festival d'Aix-en-Provence; the title role of Mozart's *Mitridate, Re di Ponto* at the Salzburg Festival; and concerts and recitals throughout Europe.

**CAREER HIGHLIGHTS** Recent performances include Tito in *La Clemenza di Tito* in concert at the Festival d'Aix-en-Provence; the Duke of Mantua at Staatsoper Berlin and in Naples; Chevalier des Grieux in *Manon* in Hamburg and Barcelona; Pinkerton in *Madama Butterfly* and Faust in *La Damnation de Faust* in concert with the City of Birmingham Symphony Orchestra; Orombello in Bellini's *Beatrice di Tenda*, Nemorino in *L'Elisir d'Amore*, and Alfredo in *La Traviata* at the Paris Opera; Alfredo at the Deutsche Oper Berlin; Rodolfo at the Canadian Opera Company and Théâtre des Champs-Élysées; and Roméo in *Roméo et Juliette* at San Francisco Opera, Paris's Opéra-Comique, and in Bordeaux.



## Luca Salsi

BARITONE (PARMA, ITALY)

**THIS SEASON** The title role of *Rigoletto* at the Met and in Venice and Verona; the title role of *Nabucco* at Staatsoper Berlin and in Verona; Scarpia in *Tosca* in Monte Carlo and at La Scala; the title role of *Simon Boccanegra* in Rome; Francesco Foscari in *I Due Foscari* in Modena; Carlo Gérard in *Andrea Chénier* and Count di Luna in *Il Trovatore* at the Vienna State Opera; Carlo Gérard in Parma and in concert at the Salzburg Festival; Germont in *La Traviata* in Madrid, Verona, and in concert at the Salzburg Festival; Rigoletto and Germont in concert at the Tirolo Festival Erl; and concerts in Parma, Piacenza, and Naples.

**MET APPEARANCES** Amonasro in *Aida*, Rigoletto, Germont, Scarpia, Miller in *Luisa Miller*, Enrico in *Lucia di Lammermoor*, Count di Luna, Rodrigo in *Don Carlo*, Don Carlo in *Ernani*, and Sharpless in *Madama Butterfly* (debut, 2007).

**CAREER HIGHLIGHTS** Recent performances include Amonasro and Scarpia in Verona, Germont in Naples, the title role of *Falstaff* and Simon Boccanegra at the Vienna State Opera, Scarpia at the Bavarian State Opera and in Parma, Francesco Foscari in Piacenza, Barnaba in *La Gioconda* at the Salzburg Festival, and Simon Boccanegra at La Scala.