

Diorama Drama

Where is the action taking place (e.g., a high school, movie set, or alternate world)?

When is the action taking place (e.g., in contemporary times, in a historical period, in the distant future)?

Why does this setting make sense for the opera's plot?

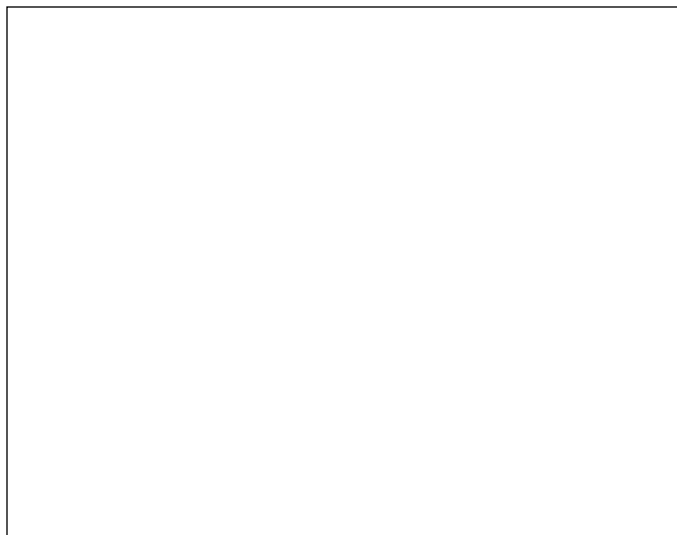
Who are the individual characters and what roles do they play in this new setting (e.g., Escamillo is a football player, Carmen is a cheerleader, Micaëla is a geek, etc.)?

What should the set design look like for each act (e.g., school hallway, football field, bowling alley)?

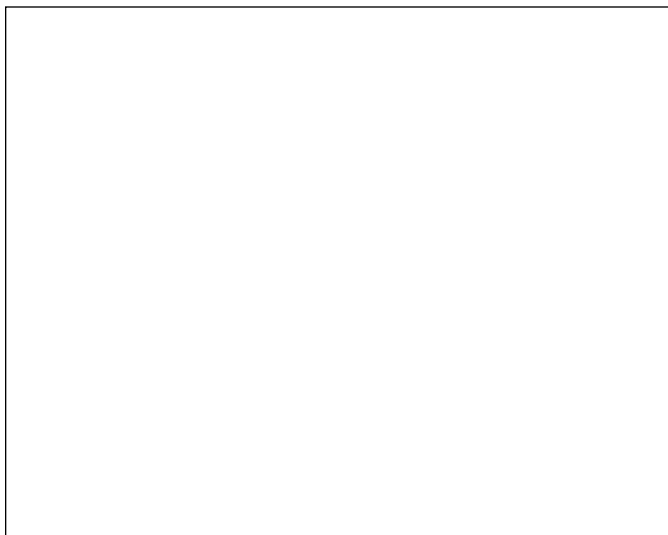
Diorama Drama

Sketch your design for each act of *Carmen*.

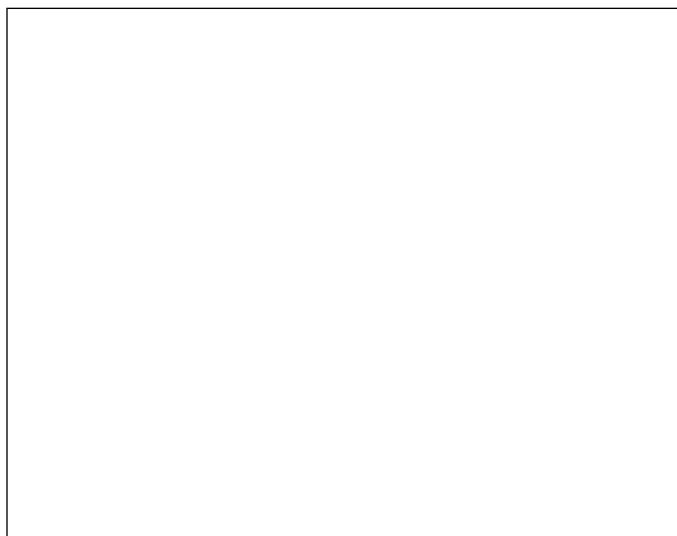
ACT I



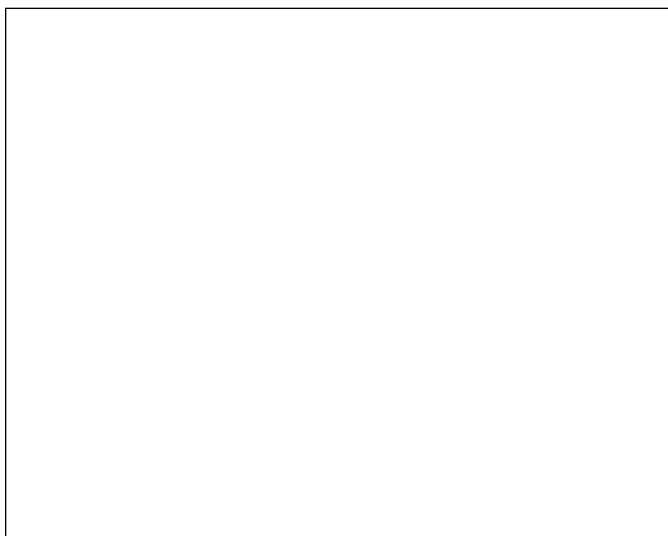
ACT II



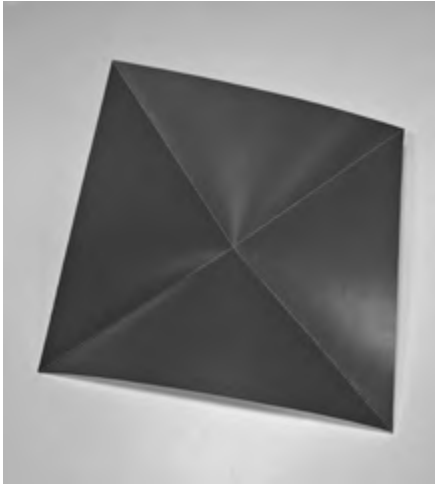
ACT III



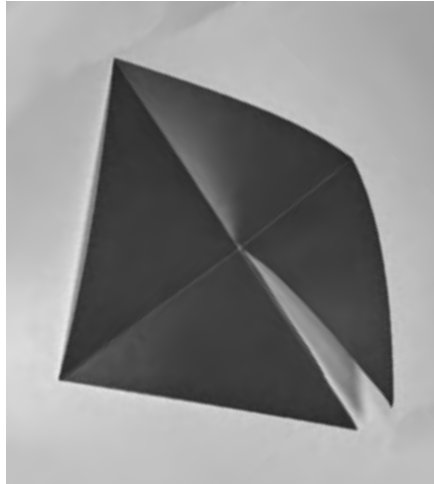
ACT IV



Diorama Drama



Fold a piece of square construction paper along both diagonals.



Cut from one corner to the center of the paper



Fold the two triangles next to the cut onto each other and fasten with glue or tape.